

KINGTON WALKING FESTIVAL – WALKS AT LLANDEGLEY BROCHURES 2016, 2017 AND SPRING 2018



KINGTON
WALKS 

KINGTON  WALKS

SPRING WEEKEND

20 - 22 APRIL 2018

www.kingtonwalks.org
07552 087786



SATURDAY 21 APRIL 2018



Sa4 Hergest Croft Gardens in Flower

Start 10:00am Entrance, Hergest Croft Gardens (SO 284 566)

Duration 3 hours

Distance 3 miles

Leader Elizabeth Banks and Rowan Griffiths

Max N° 15 people

Price £8.50 including garden entry

Hergest Croft Gardens is the creation of five generations of the Banks' family, all of whom have been passionate gardeners and distinguished dendrologists. It comprises 'the most extensive private arboreta in Britain' with over ninety champion trees. Set in seventy acres, the walk will include the Gardens, the Park and the medieval Park Wood, in which the landscape conjures up a Himalayan valley but with many more varieties of rhododendrons of immense size. Homemade lunches and teas are available in the tea room. Stout shoes and rainwear required. Elizabeth Banks, President Emeritus of the RHS will lead the walk and Rowan Griffiths, the gardener responsible for cataloguing the collection, will assist.

Sa5 A Walk too Spa! Llandegley to Llandrindod Wells

Start 10:00am for 10.10am bus Mill Street Car Park, Kington (SO 295 565)

Duration 7 hours

Distance 7 miles

Leader Sandra Payne

Max N° 20 people

Price £7.50 plus bus fare

Bring a Packed Lunch and Bus Fare. After catching the 10:10am bus (461) from Kington the walk starts with a steep ascent to the top of Llandegley Rocks with 360 degrees of stunning views followed by a walk along the ridge to Llandrindod Wells. Some road walking, some wet areas and a few stiles. A long descent to Llandrindod lake to catch return bus.



A Little Reflection on Lunch by Nigel Page - Winner of the 2017 Festival Photographic Competition

Saturday Evening Entertainment

There will be a live band playing at the Oxford Arms on Duke Street on Saturday night. Admission is free. Further information can be found on our website and in our regular newsletter which you can sign up for on our website if you don't already receive it.

KINGTON WALKING FESTIVAL 2018

20th–23rd September 2018

Note this date in your diary when we will be holding our 7th annual festival
Our 2018 Festival brochure and website will be available from end April



KINGTON WALKS

For more information and to sign up to our newsletter please see:

www.kingtonwalks.org

info@kingtonwalks.org
07552 087786



KINGTON
WALKS

KINGTON WALKING FESTIVAL

21 - 24 SEPTEMBER 2017

KINGTONWALKS.ORG

T 07585 055 984



THURSDAY 21 SEPTEMBER 2017

Th5 Over The Smatcher & into The Fforest

Sponsored by Kington Tourist Information Centre

Start 10:00 for 10:10 bus Mill Street car park, Kington (SO 295 565)

Duration 5 hrs including pub stop

Distance 6 miles

Leader Geoff Cooper



Max N° 20 people

Price £5.50



Bring money for bus fares, drinks & lunch. After alighting at the former medieval county town of New Radnor, the walk heads through a stretch of woodland before a steep climb up to the top of the hill known as the Smatcher. After admiring the fabulous views at 400m we continue across open countryside to reach Llynheillin Lake and the remote pub, The Fforest Inn for lunch. Return to Kington will be on the 14:28pm bus.

Th6 Rock Around Aymestrey

Start 10:00am Aymestrey Village Hall (SO 425 649)

Duration 7 hrs

Distance 7 miles

Leader Andrew Jenkinson & Robert Williams



Max N° 20 people

Price £7.50



Bring a packed lunch or money for a very brief 'light bite' at Croft Castle. Not following a mid-20th century

music trail, but a circular walk from Aymestrey over the ridge to Croft Castle and up to the Croft Ambrey hill fort, to see what the rocks of the area can tell us about the distant past, and how they have been utilised by man. The rocks have left a distinctive mark on the landscape since their formation over 400 million years ago. Fossils in the quarries tell of life in a shallow sea in the southern tropics. Quarries in these rocks were a source of building stone as well as to be burnt for lime. The famous geologist, Murchison, used the rock sequence around Aymestrey to name a significant part of the geological time scale in his book defining the 'Silurian System' in 1839. Though on recognised footpaths, including part of the Mortimer Trail, the walk is rough underfoot in places, has some steep gradients and a few stiles.

Th7 A Walk on the Wild Side

Llandegley to Water Break-its-Neck Waterfall

Start 10:00 for 10:10 bus Mill Street car park, Kington (SO 295 565)

Duration 7 hrs

Distance 8 miles

Leader Sandra Payne

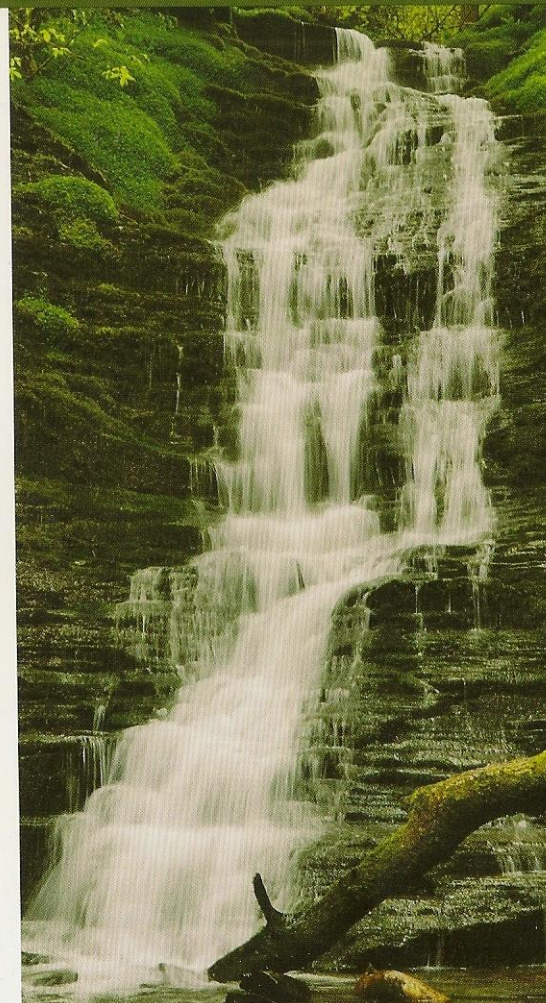


Max N° 20 people

Price £7.50 plus bus fares



Bring a packed lunch. Alighting the bus at Llandegley, we cross the road and take a lane into the Radnorshire hills. Crossing the tops of the hills offers spectacular views before we drop down through the forestry of Warren plantation to the waterfall and out to the main road for the return bus at 4.15pm. There are two steep climbs but no stiles.



THURSDAY 21 SEPTEMBER 2017

Th1 The Hard Rock Ridge

Start 08:45 Mill Street car park, Kington (SO 295 565)

Duration 9 hrs

Distance 11 miles

Leader Gary Burton

Max N° 14 people

Price £10.50 plus bus fare



Bring packed lunch and bus fare. A spectacular walk along two consecutive ridges of hard rock that create a dramatic landmark in the landscape. We take a minibus to Bulth Wells, and take a steep walk up through the quarry roads to the top of the first ridge and then along into wilderness, passing several hill forts and standing stones. Descending into a remote valley we then climb again to the second ridge and using tracks and paths continue on to Llandegley Rocks and descend to the church. This walk is well off the beaten track. Return will be by public bus service.

Th2 Living Landscapes

Sponsored by The Herefordshire Wildlife Trust (HWT)

Start 09:00, Birches Farm near Kington (SO 296 538) Parking available

Duration 7 hrs

Distance 11 miles

Leader TBC

Max N° 20

Price £7.50



Bring packed lunch and money for drinks. The walk explores the Herefordshire living landscape with a circular walk from Birches Farm, HWT's reserve (at time of press

not yet open to the public), untouched by the plough or fertilisers for centuries. The Farm is now recognised as a nationally significant site by DEFRA and Natural England, and has been designated England's newest Site of Special Scientific Interest (SSSI). The walk continues via two other HWT reserves and other sites of interest. The walk leader will talk about the flora, fauna, biodiversity and history of the reserves and the wider landscape. On reaching Eardisley we will stop at the Tram Inn to eat our packed lunches and drinks may be purchased. The walk ends back at Birches Farm, 2.5 miles south of Kington on the A4111.

Th3 Circling the Arrow

Huntington, Newchurch and Michaelchurch on Arrow

Start 09:15 Place de Marines, Kington (SO 295 566)

Duration 6 hrs

Distance 8 miles

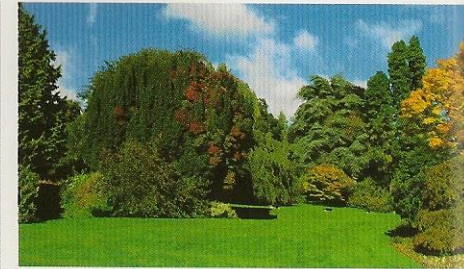
Leader Mal Mason

Max N° 14 people

Price £10.50 including transport



Bring packed lunch. This circular walk follows public footpaths through the beautiful landscape where England and Wales meet around the valley of the river Arrow. Linking the hamlets of Huntington, Newchurch and Michaelchurch on Arrow, this is an opportunity to explore this historic border landscape alive with reminders of the past. The route includes a number of stiles and some steepish ascents and descents, but this is a walk to savour, and it will be completed at a pace to suit the group. A minibus will take you to the start and return you to Kington.



Th4 Trees of the World: Meet the Champions

Start 10:00 Entrance Hergest Croft Gardens (SO 284 566)

Duration 3 hrs

Distance 3 miles

Leader Elizabeth Banks & Rowan Griffiths

Max N° 15

Price £8.00 includes Garden entry



Hergest Croft Gardens is the creation of five generations of the Banks family, all of whom have been passionate gardeners and distinguished dendrologists. It comprises 'the most extensive private arboreta in Britain' with over ninety champion trees. Set in seventy acres, the walk will include the Gardens, the Park and the medieval Park Wood, in which the landscape conjures up a Himalayan valley but with many more varieties of rhododendrons of immense size. Homemade lunches and teas are available in the tea room. Stout shoes and rainwear required. Elizabeth Banks, President Emeritus of the RHS will lead the walk and Rowan Griffiths, the gardener responsible for cataloguing the collection, will assist. A second walk is arranged for Friday.

KINGTONWALKS.ORG

T 07585 055 984



KINGTON WALKING FESTIVAL SEPTEMBER 15TH - 18TH 2016



KINGTON
WALKS

THURSDAY 15 SEPTEMBER 2016



Th4 A Walk too Spa! Llandegley to Llandrindod Wells

Start 10:00am Mill St car park, Kington (SO 295 565)

Duration 7 hrs

Distance 7 miles

Leader Sandra Payne

Max No 20 people

Price £7.00 + bus fare



Bring packed lunch & bus fare. A very steep ascent to the top of Llandegley rocks with 360 degrees of stunning views. Walking along the ridge to Llandrindod Wells. Some road walking, some wet areas and a few stiles. A long descent to Llandrindod lake to catch the return bus. Catching the 10:10am bus (461) to Llandegley.

Th5 Along Glyndwr's Way to the Heart of Wales

Sponsored by Southbourne B&B

Start 10:00am Mill Street car park, Kington (SO 295 565)

Duration 8 hrs

Distance 11 miles

Leader Geoff Cooper

Max No 20 people

Price £7.00 + bus fare



Bring packed lunch & bus fare. A walk in 3 parts taking in bus and train journeys and pub stops. Included is the first 7 miles of the Glyndwr's Way with a couple of steep climbs and a lunch time stop in a remote village pub. A short train trip on the beautiful Heart of Wales line

is followed by a 3.5 miles walk with some moorland but less climbing. If time allows a brief pub visit whilst waiting for the bus back to Kington. Starting at 10:00am to catch the 10:10am service bus to Knighton. Bring money for buses, train and drinks the building stones tell. From tropical oceans to quarrymen and architects, every stone has a secret history. The walk will be on pavements and footpaths around the town centre.

Th6 Trees of the World, Meet the Champions

Start 10:00am Entrance, Hergest Croft Gardens, Kington (SO 284 566)

Duration 3 hrs

Distance 3 miles

Leader Elizabeth Banks & Rowan Griffiths

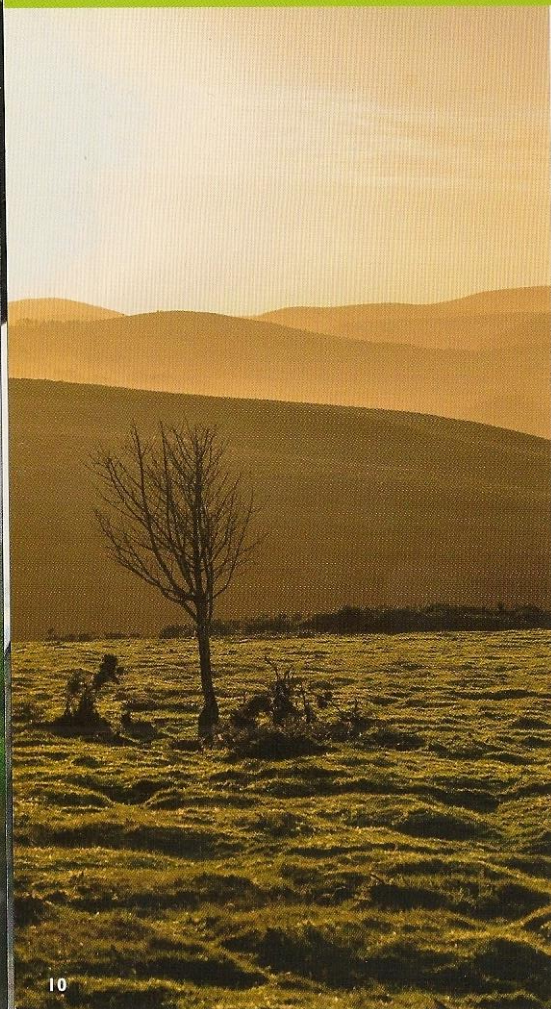
Max No 15 people

Price £7.50 (including garden entry)



Hergest Croft Gardens is the Banks' family garden where four generations have been passionate gardeners and distinguished dendrologists. It comprises one of 'the most extensive private arboreta in Britain' with over 90 champion trees. Set in 70 acres, the walk will include the Gardens, the Park and the medieval Park Wood, which contains a garden planted like a Himalayan valley. Homemade lunches and teas are available in the tea room. Stout shoes and rainwear required. Elizabeth Banks, President Emeritus of the RHS will lead the walk and Rowan Griffiths, the gardener responsible for cataloguing the collection, will assist. This walk is repeated on Friday (Fr4).

FRIDAY 16 SEPTEMBER 2016



Fr1 The Hard Rock Ridge

Start 8:45am Mill St car park, Kington
(SO 295 565)

Duration 9 hrs

Distance 11 miles

Leader Nick Eve

Max No 14 people

Price £10 + bus fare



Bring a packed lunch and bus fare. A spectacular walk along two consecutive ridges of hard rock that create a dramatic landmark in the landscape. We will take a minibus to Buihth Wells, walk steeply up through the quarry roads to the top of the first ridge and then along into wilderness, passing several hill forts and standing stones. Descending into a remote valley we will climb again to the second ridge and then using tracks and paths, continue on to Llandegley Rocks and descend to the church. We make a small detour during the second ridge to visit an old mining level, so bring a torch. This is a remote country walk well off the beaten track. Return will be by public bus service.

Fr2 Hanter Hill Highlights

Sponsored by Redkite Fostering

Duration 4 hrs

Distance 6 miles

Leader Tony Collier



Find the badger sett visible from space, explore the cauldron where the trolls hang out, have your picture taken at the hermit's palatial residence, maybe catch a glimpse of the witch at the ghost house or find the lost grave of the poor soul who's dying wish was to be buried

on Hanter's summit, all this and so much more on a fun guided tour of Hergest's smaller neighbour. On a clear day you will see Clee Hill, The Wrekin, The Brecon Beacons, The Black Mountains and The Malvern Hills. Usually red kites, peregrine falcons and buzzards will be seen, along with evidence of foxes, badgers and host of other wildlife big and small. This is a six mile walk that takes you along Worsell Wood, with an ascent of Hanter Hill and finishes with a stroll along Hergest Ridge before dropping back into Kington. Tea, Coffee and light snacks will be provided free of charge on the summit of Hanter Hill. Crossing two stiles and a stream this walk can get muddy even in dry weather and there is a steep section to the summit of Hanter Hill. This is a walk just for Kington Primary School.

Fr3 Eywood: the ghost of the park & garden

Sponsored by The Oxford Arms

Start 10:00am Mill Street car park, Kington
(SO 295 565)

Duration 5 hrs

Distance 6 miles

Leader Richard Burden

Max No 20 people

Price £7.00 + bus fare



From the Eywood drive entrance at Titley, the walk visits the Titley Pool Nature Reserve and proceeds to the site of the demolished house via its abandoned carriage drive, exploring the remains of the park, pleasure gardens and other features before returning to Kington on footpaths, tracks and lanes via Rushock and Barton. Our thanks to various landowners for permitting access to areas not generally open to the public. Meeting 10:00am for