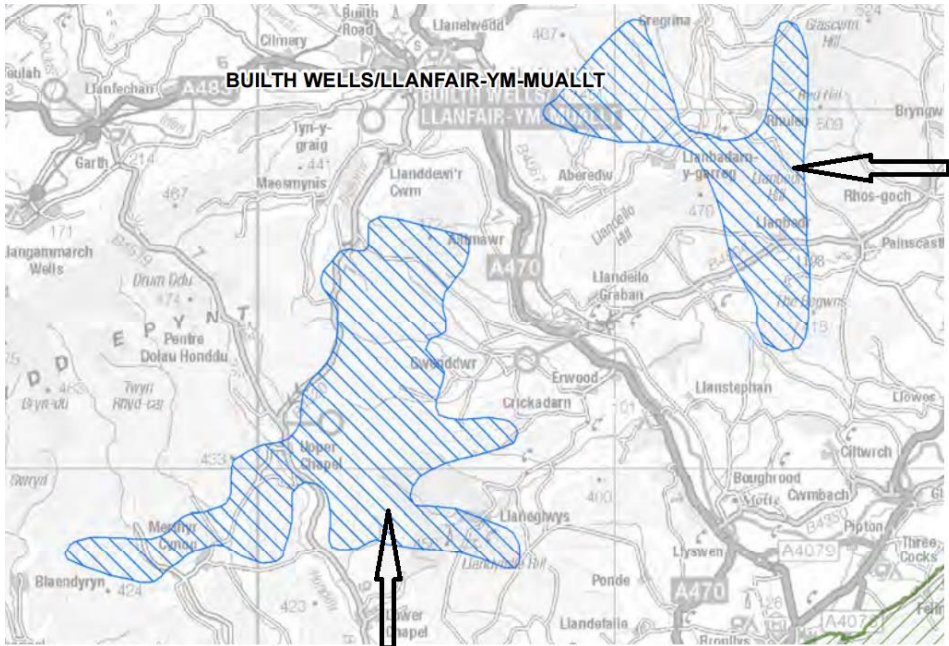
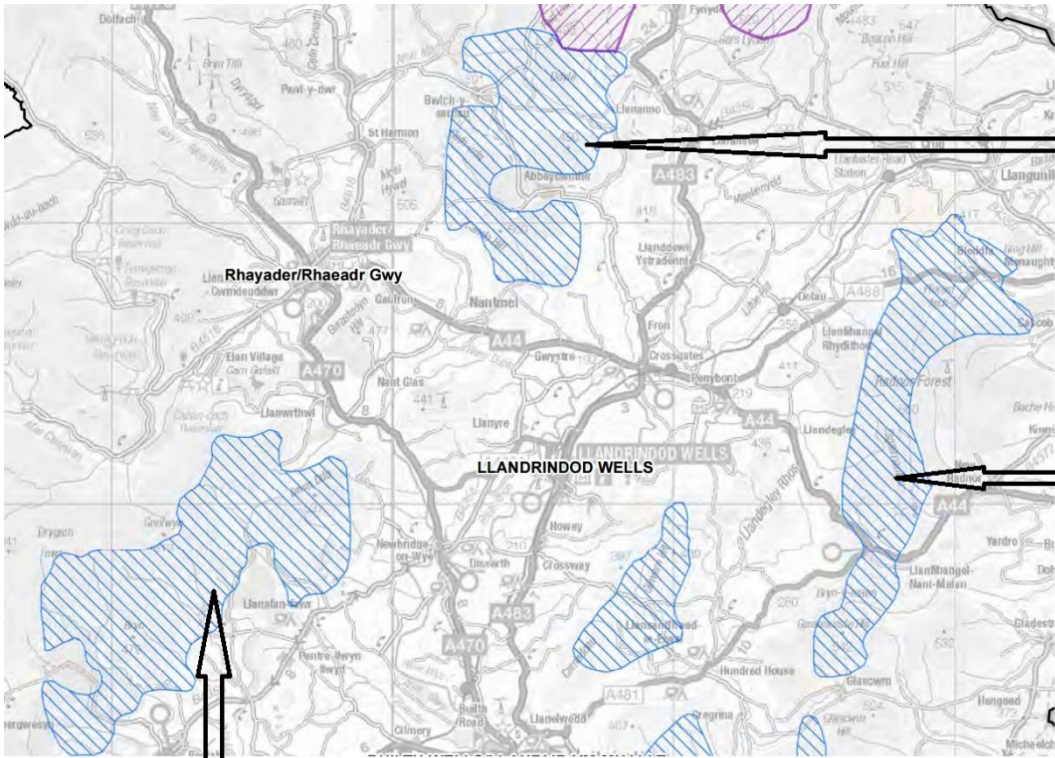


POWYS SCHEDULE OF FURTHER FOCUSED CHANGES – CPRW POWYS BRANCHES RESPONSE FFC79  
 TOPIC PAPER



1. Highly popular walking/riding area of The Begwyls including National Trust land
2. Popular tourist and walking area of Aberdw Common
3. Very fine views in many directions including south towards the Black Mountains
4. Various popular horse riding routes

1. Epynt Way - circular long distance footpath
2. 373 (approximately) Scheduled Ancient Monuments
3. Fine views south towards the Brecon Beacons
4. Popular walking area in Brycheiniog forest near Llaneglwys
5. Good bird watching areas especially for moorland species such as Hen Harriers and Golden Plover



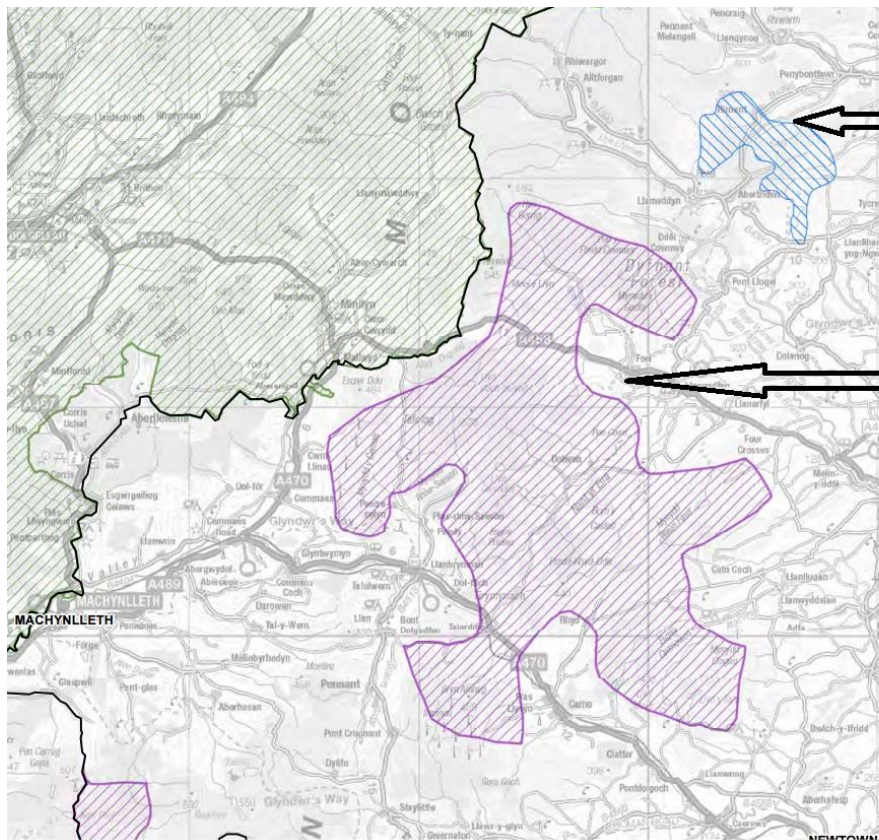
1. Popular area for visitors including to the Abbey at Abbeycymhir
2. Fine views along routes between St Harmon, Abbeycymhir and Bwlch y Sarnau
3. Approximately 178 Scheduled Ancient Monuments
4. Locally important historic farm sites such as 'Fishpool Farm'

1. Radnor Forest, very popular visitor area
2. Horse carriage drives
3. contains 5 scenically valued waymarked walks
4. Popular waterfalls of 'Break your Neck'
5. "It has been said that if you travel due east from the Black Mixen hill at the top of the forest the next highest point you come to is the Russian Urals!"

1. Dominates the Elan valley estate, a 'top spot' for visitors to mid Wales
2. Highly valued landscape - one of the wilderness areas of Wales
3. Abergwesyn area contains National Trust land with Llanwrthwl cycle route, ancient abandoned communities
4. over 500 scheduled ancient monuments

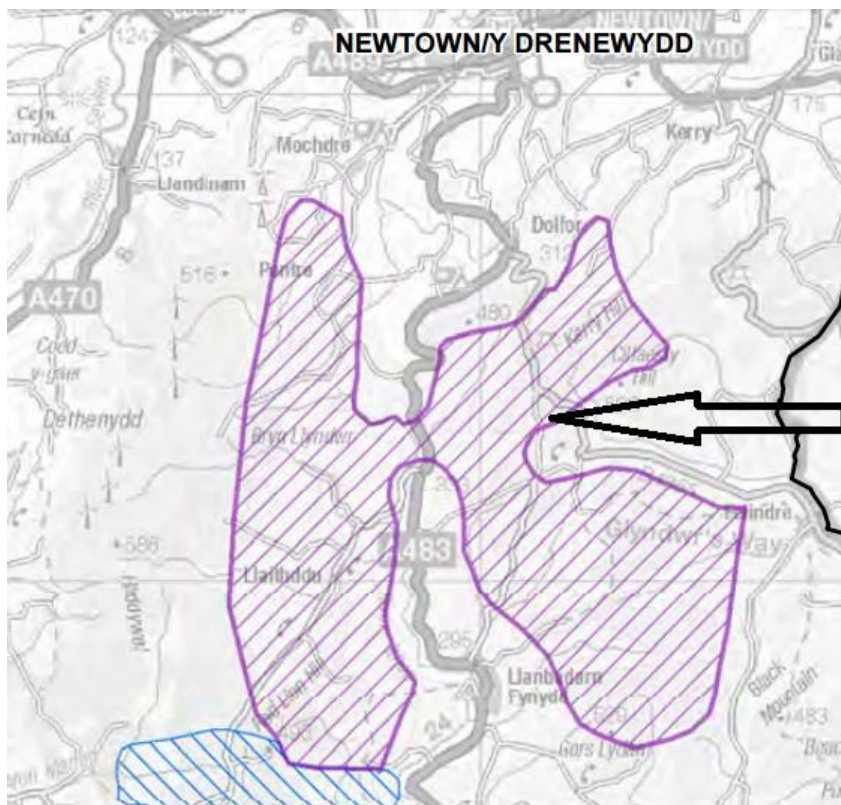
These maps present some of the visitor and resident attractions associated with particular LSAs and also indicate how environmental factors have not been given due weight in the Strategic Search Areas which gives little assurance of their proper consideration in LSAs.

POWYS SCHEDULE OF FURTHER FOCUSED CHANGES – CPRW POWYS BRANCHES RESPONSE FFC79  
 TOPIC PAPER



- 1. Dominates Lake Vyrnwy, with extensive open access
- 2. RSPB nature reserves
- 3. Pererindod Mehangell Walk

- 1. Glyndwr's Way.
- 2. very large areas of open access in the west



- 1. Very large areas of open access land e.g. Beacon Hill, Cilfaesty Hill and NW and SW of Llangurig.
- 2. Impacts on the Kerry Ridgeway Promoted Walk
- 3. Impacts on the Severn Way
- 4. Impacts on Glyndwr's Way (National Trail)
- 5. Impacts on the Wye Valley Walk from its source to Rhayader.