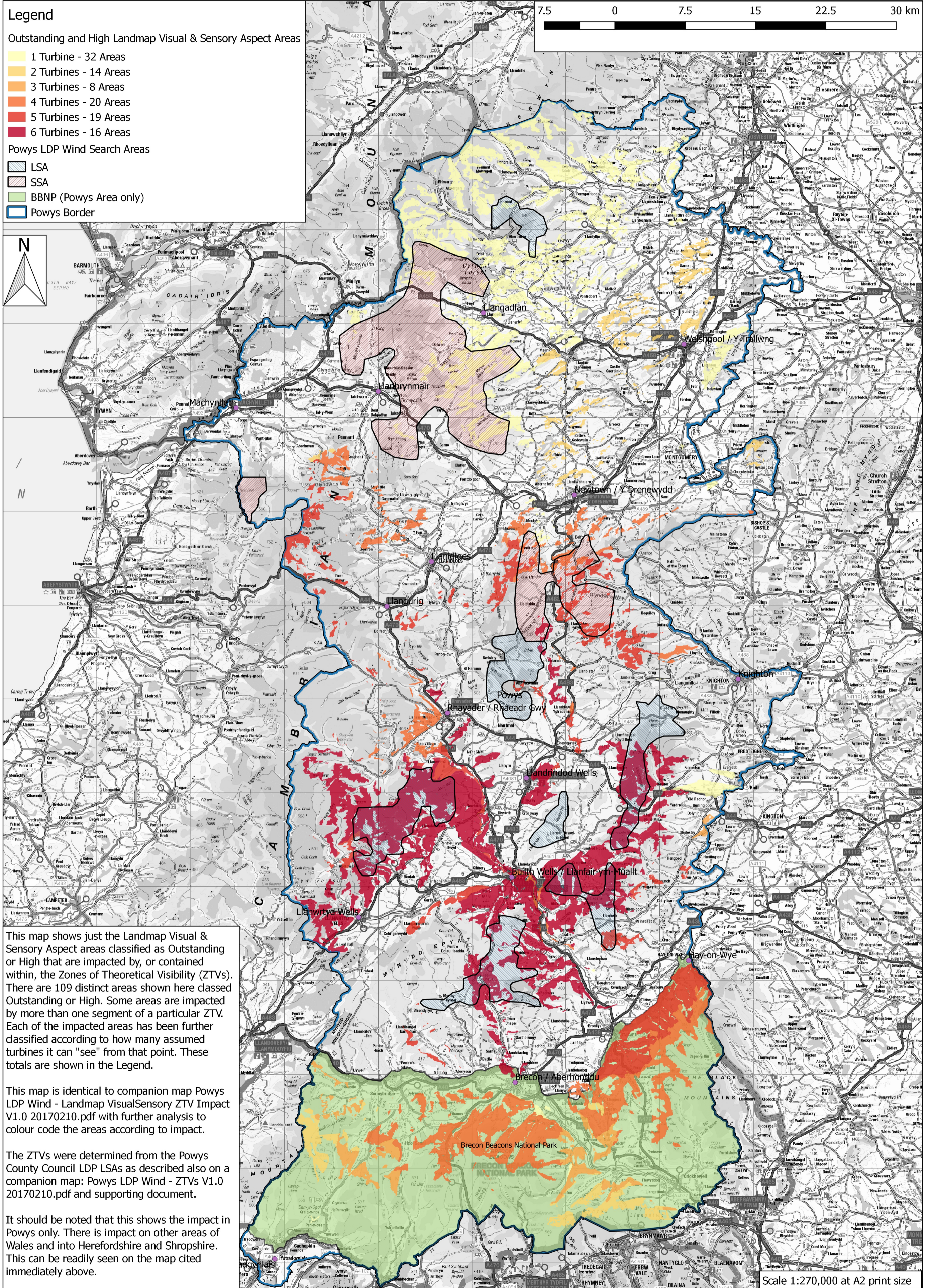


Powys: Landmap Visual & Sensory Areas/Zones of Theoretical Visibility Heatmap



This map shows just the Landmap Visual & Sensory Aspect areas classified as Outstanding or High that are impacted by, or contained within, the Zones of Theoretical Visibility (ZTVs). There are 109 distinct areas shown here classed Outstanding or High. Some areas are impacted by more than one segment of a particular ZTV. Each of the impacted areas has been further classified according to how many assumed turbines it can "see" from that point. These totals are shown in the Legend.

This map is identical to companion map Powys LDP Wind - Landmap Visual/Sensory ZTV Impact V1.0 20170210.pdf with further analysis to colour code the areas according to impact.

The ZTVs were determined from the Powys County Council LDP LSAs as described also on a companion map: Powys LDP Wind - ZTVs V1.0 20170210.pdf and supporting document.

It should be noted that this shows the impact in Powys only. There is impact on other areas of Wales and into Herefordshire and Shropshire. This can be readily seen on the map cited immediately above.