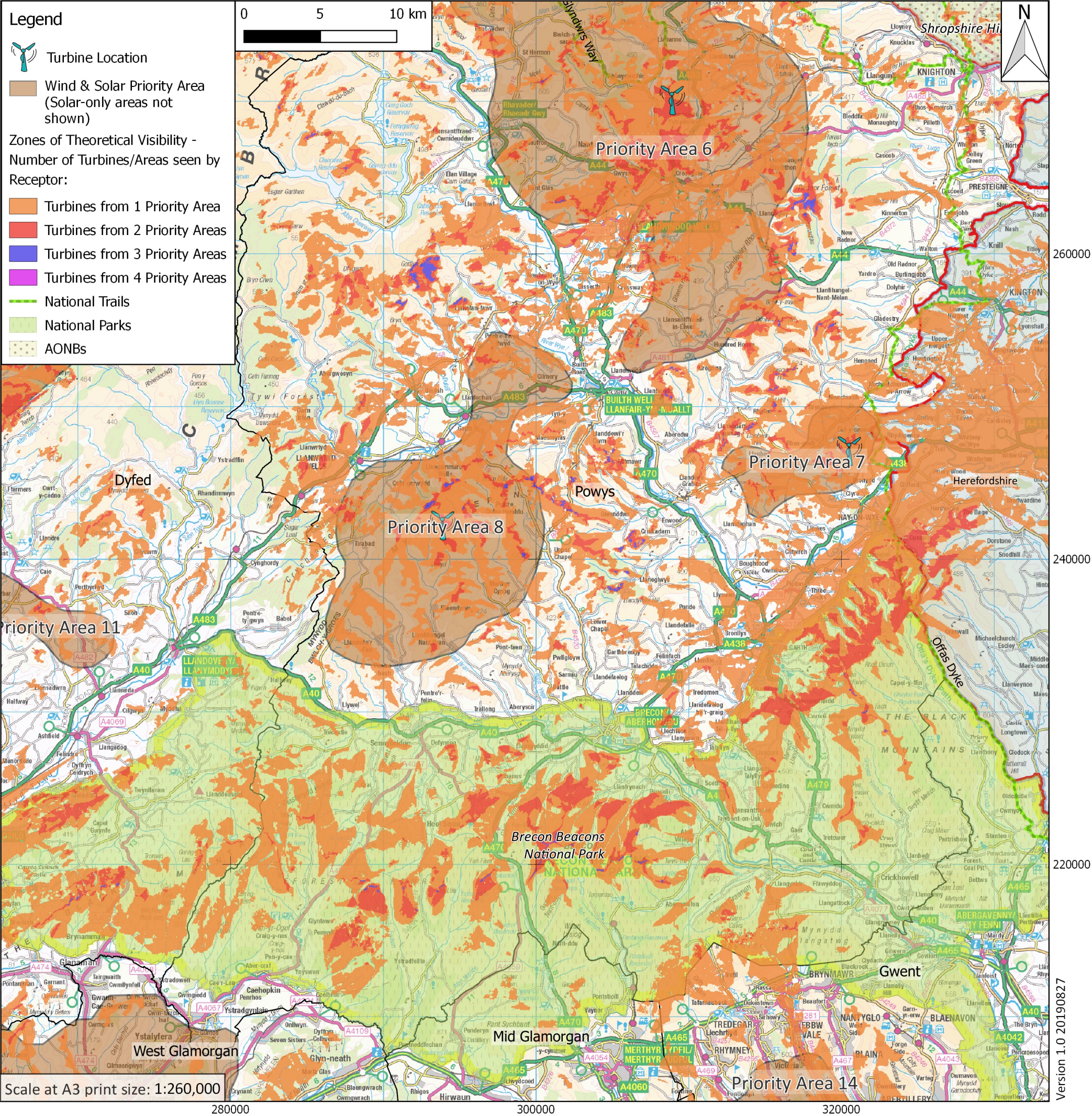


Welsh Government Draft National Development Framework: Zones of Theoretical Visibility in Southern Powys for Wind & Solar Priority Areas



A single wind turbine was assumed at the approximate centre of each Wind & Solar Priority Area for the purpose of the calculations. Where the relief was unsuitable at this point, e.g. in a deep valley, the point was moved to the nearest adjacent high point.

This map shows where, at an absolute minimum, the hub of the turbine plus the whole of the blades will be seen. (Some areas will obviously see the whole turbine.) The blades, extending another 40 metres into the air - half as high again - will be seen at a much greater distance and therefore in areas additional to those shown on this map.

This map is indicative - a "Best Case Scenario" - with the calculations using just 12 single turbines, one in each Priority Area. In reality there will likely be several windfarms in each Priority Area, with significantly larger turbines than used for the calculations here, and the eventual visual impact on the environment will be much much greater than that indicated here.

The calculations for the Zones of Theoretical Visibility (ZTVs) were carried out using a series of elevations in landscape cells 50 metres square. The calculations cannot take into account individual variations of actual topography on the ground in each cell which may increase or decrease visibility of the turbines "on the ground"; these could be things such as walls, hedgerows, woodland, farm buildings, etc.